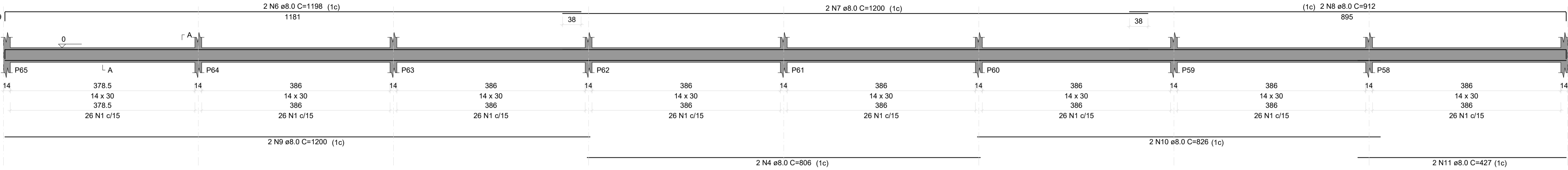
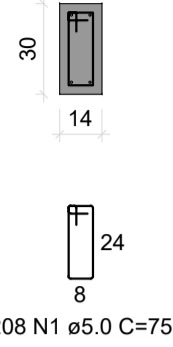


Viga (Nível 0)

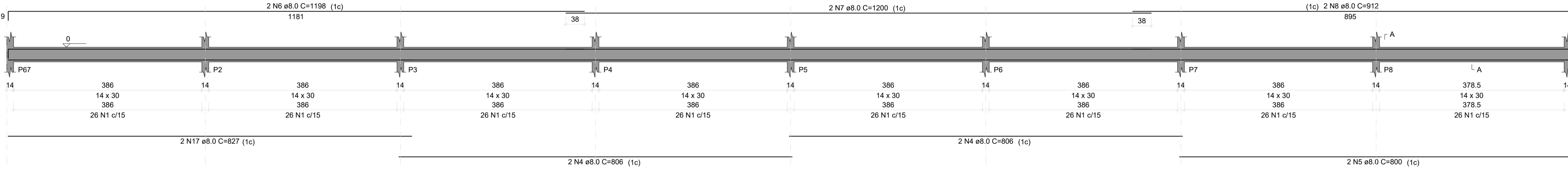
V1  
ESC 1:50



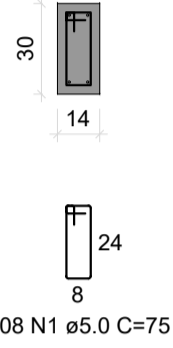
SEÇÃO A-A  
ESC 1:25



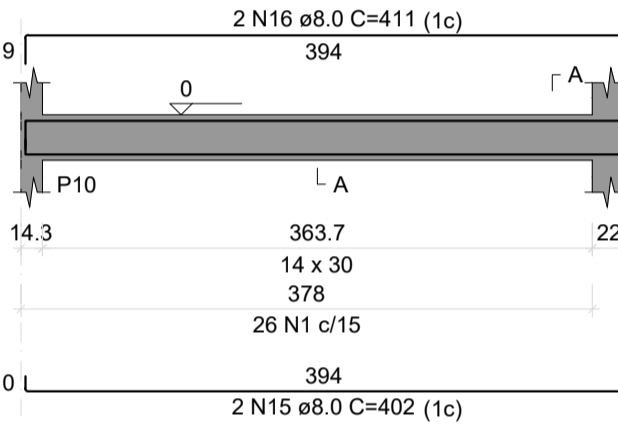
V3  
ESC 1:50



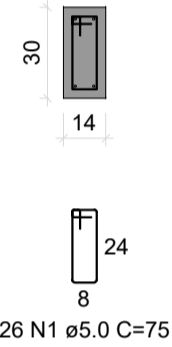
SEÇÃO A-A  
ESC 1:25



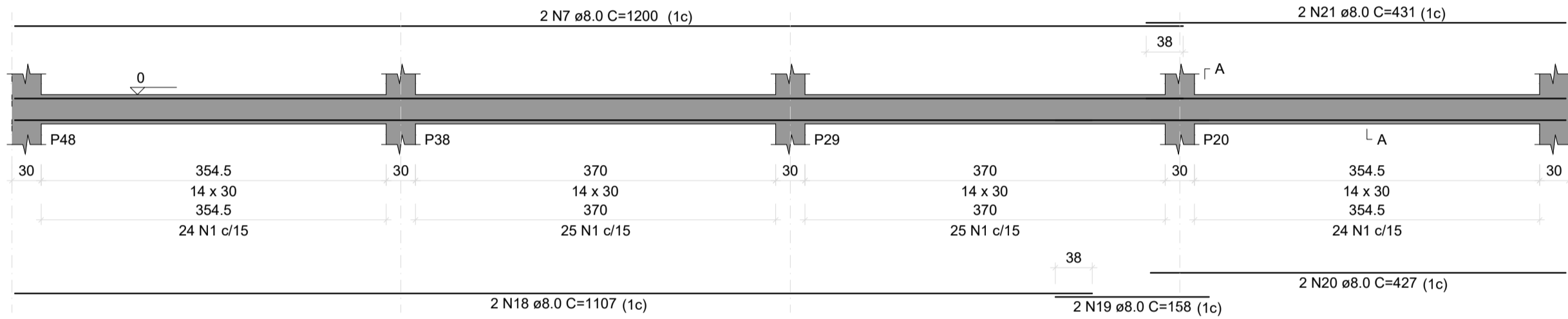
V4  
ESC 1:50



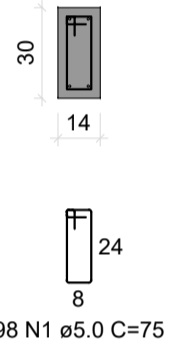
SEÇÃO A-A  
ESC 1:25



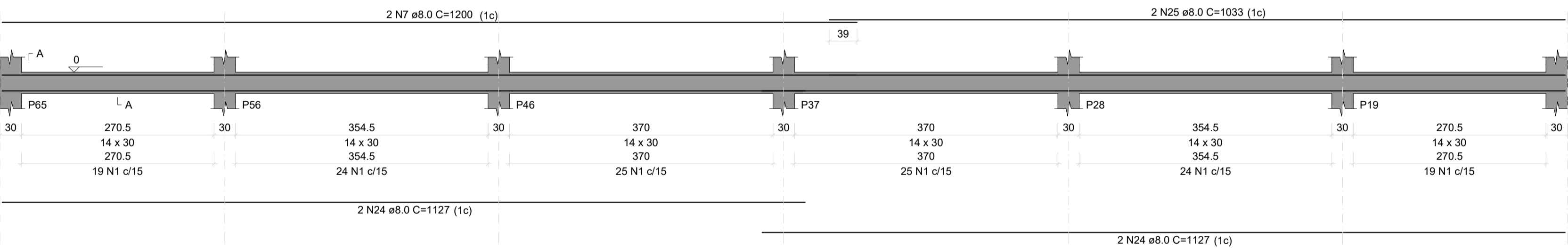
V5  
ESC 1:50



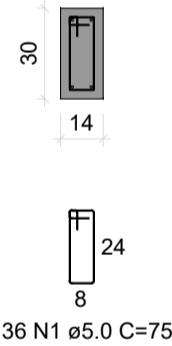
SEÇÃO A-A  
ESC 1:25



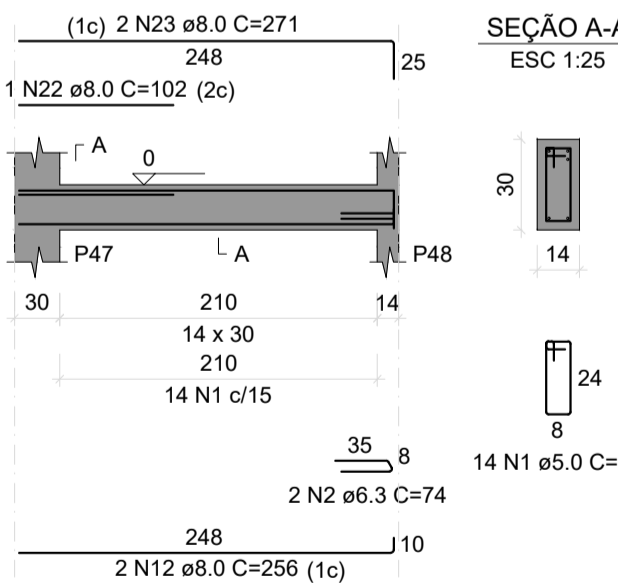
V8  
ESC 1:50



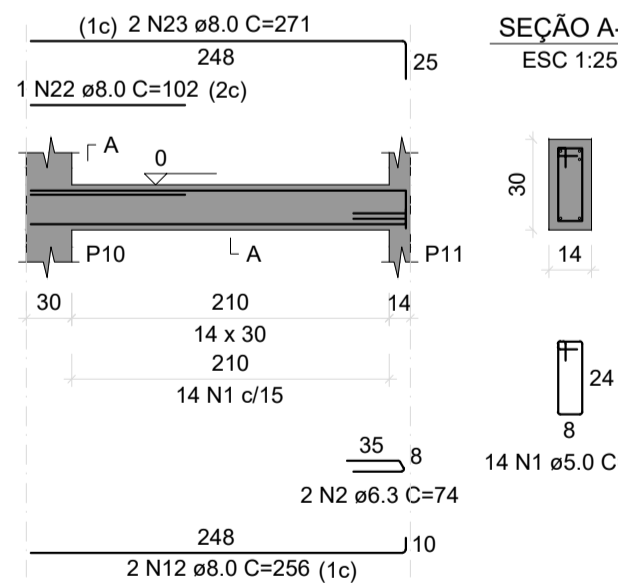
SEÇÃO A-A  
ESC 1:25



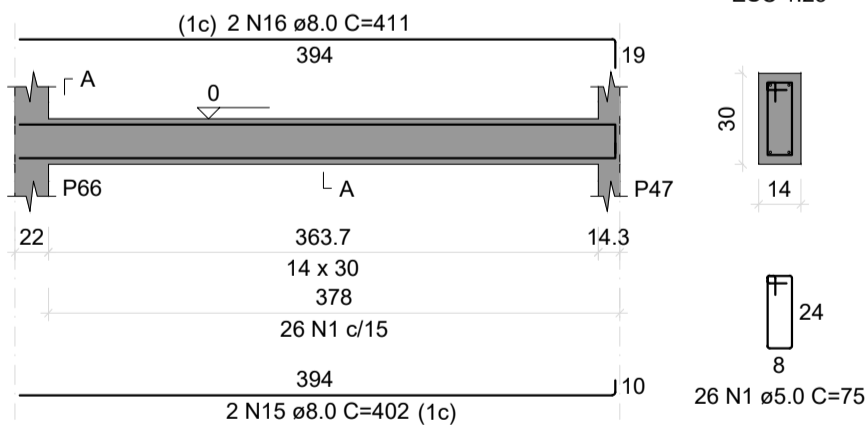
V6  
ESC 1:50



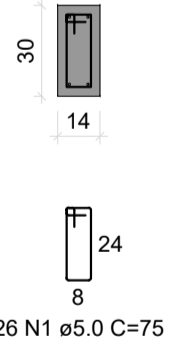
V7  
ESC 1:50



V2  
ESC 1:50



SEÇÃO A-A  
ESC 1:25



RELAÇÃO DO AÇO

AÇO	N	DIAM (mm)	QUANT	C.UNIT (cm)	C.TOTAL (cm)
V1-L2	1	5.0	952	75	71400
V2-L1	2	6.3	4	74	296
V3-L1	3	8.0	2	807	1614
V4-L1	4	8.0	10	806	8060
V5-L1	5	8.0	4	800	3200
V6-L1	6	8.0	6	1198	7188
V7-L1	7	8.0	10	1200	12000
V8-L1	8	8.0	6	912	5472
	9	8.0	2	1200	2400
	10	8.0	2	826	1652
	11	8.0	2	427	854
	12	8.0	6	256	1536
	13	8.0	1	110	110
	14	8.0	2	296	592
	15	8.0	4	402	1608
	16	8.0	4	411	1644
	17	8.0	2	827	1654
	18	8.0	2	1107	2214
	19	8.0	2	158	316
	20	8.0	2	427	854
	21	8.0	2	431	862
	22	8.0	2	102	204
	23	8.0	4	271	1084
	24	8.0	4	1127	4508
	25	8.0	2	1033	2066

RESUMO DO AÇO

AÇO	DIAM (mm)	C.TOTAL (m)	PESO + 10% (kg)
CA50	6.3	3	0.8
CA60	8.0	616.9	267.8
CA60	5.0	714	121.1
PESO TOTAL (kg)			
CA50	268.6		
CA60	121.1		

Volume de concreto (C-25) = 6.29 m³  
Área de forma = 110.86 m²

CARIMBO DE APROVAÇÕES:



TIPO DE USO:

PROJETO CEASA CATALÃO

ENDEREÇO DA OBRA:  
ARCO VIÁRIO, KM 2, ZONA RURAL, CATALÃO - GO

PROPRIETÁRIO:

PREFEITURA MUNICIPAL DE CATALÃO - GO CNPJ: 01.505.643/0001-50

AUTOR DO PROJETO:

ENGº SAMUEL GONÇALVES CARRILHO CREA nº. 1015865852/D-GO

RESPONSÁVEL TÉCNICO:

ENGº SAMUEL GONÇALVES CARRILHO CREA nº. 1015865852/D-GO

DESCRIÇÃO:

\*Viga (Nível 0)

ÁREAS:

Verificar planta de arquitetura.

ESCALA:

INDICADAS

DATA:

28/07/2022

DESENHO:

SAYONARA  
(64)3443-1688

REVISÃO:

ESTRUTURAL

11/15